

WASI STEEL INDUSTRIES FACTORY CO.



wasi steel industries
واسي للصناعة الحديدية



wasi steel industries
واسي للصناعة الحديدية



BUILDING RELATIONSHIP ON INTEGRITY & PERFORMANCE

INDEX

- Introduction
- Scope of Services
- Organization Chart
- Our Service products
- In House Departments
- Engineering Department
- Plant & Production Facilities
- QHSE Department
- Certificates & Legal Document
- Projects Pictures
- EPC Vendor Approvals
- Contact Details



INTRODUCTION

WASI Steel Industries is a member of Al-Ajab Group of Companies which was established three decades ago in Saudi Arabia, it is a world-class galvanizer and manufacturer based in Ad Dammam, Saudi Arabia. WASI Steel Industries Specialized in Fabrication of Structural steel and plate works for major power & desalination plants, petrochemical plants, oil & gas sector, cement plants, steel mills, high-rise buildings projects as well as other industrial and commercial complexes within KSA, Gulf.

The Plant has annual production capacity of 12000 metric ton of structural steel works. The plant has 7500 square meters lot capacity with fabrication workshop area equipped with state-of-the-art machines and facilities along with and open yard storage space.

Structural steel division is supported by 200-strong multi-disciplined team offers a genuine end-to-end service, highly skilled and professional engineers using state of the art software to provide engineering services ensuring the highest standards of innovation, quality and production. WASI steel industries utilize the latest Engineering preparation and state-of-the-art computer numerical coded (CNC) equipment for preparation.

WASI Steel Industries Quality Management System are in conformance with requirements of ISO 9001:2015 and Health, Safety and Environment Certificates ISO1400:2015 and OHSAS 18001:2007.

WASI STEEL INDUSTRIES FACTORY CO.



wasi steel industries
واسي للصناعة الحديدية

Company Name	: WASI STEEL INDUSTRIES FACTORY CO.
General Manager / CEO	: WALEED KHALID AJAB ALHAJIRY
Company Type	: LIMITED LIABILITY COMPANY
Year Established	: 2014
Business	: FABRICATION & ERECTION OF STEEL STRUCTURES

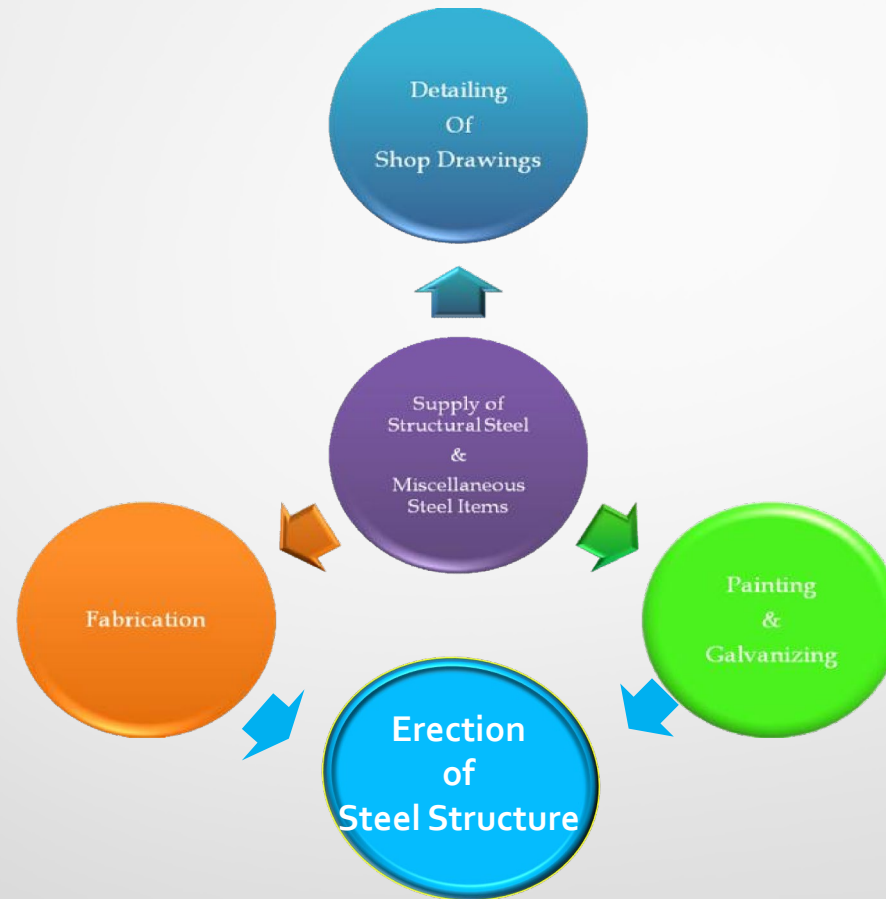
OUR MISSION & VISION

Our Mission to provide the best value and satisfy our client to deliver the construction and fabrication of steel structure within the expectation.

Our Vision is to be recognized by client to be a world-class services and to become the preferred Construction company.

BUILDING RELATIONSHIP ON INTEGRITY & PERFORMANCE

SCOPE OF SERVICES



OUR SERVICE PRODUCTS

- 1- Steel Structures (Extra Heavy, Heavy, Medium And Light)
- 2- Steel Buildings, Warehouses, Sheds
- 3- Walkways & Mezzanine Floors
- 4- Canopies, Roof Frames & Racks
- 5- Platforms & Skids
- 6- Pipe Racks And Pipe Supports
- 7- Handrails, Ladders, Stairs And Misc.

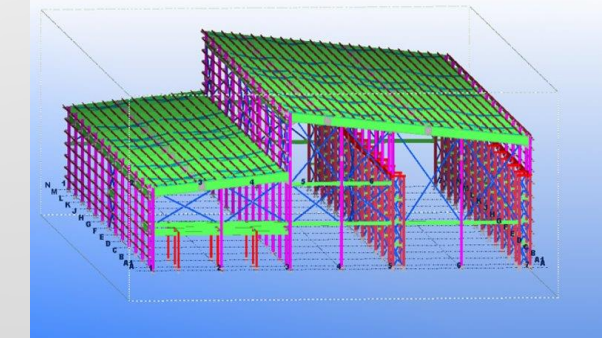
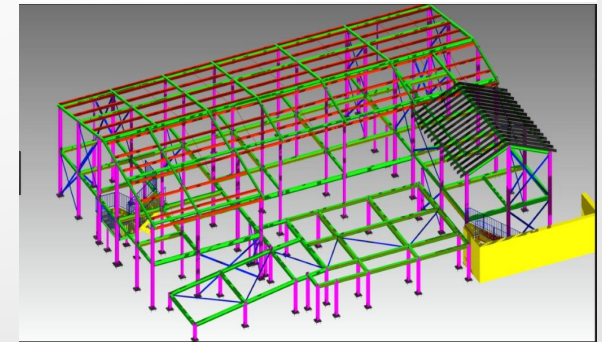
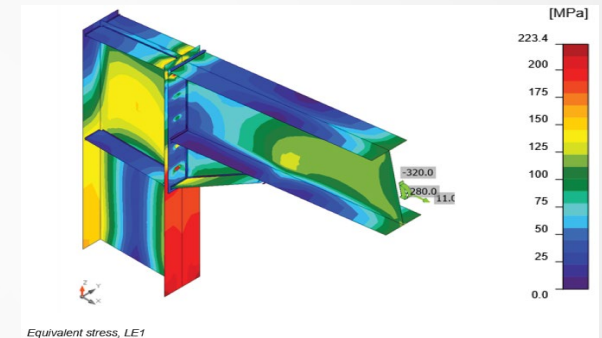


IN HOUSE DEPARTMENTS

1. Sales And Marketing
2. Estimation
3. Engineering
4. Procurement
5. Production Department And Operations
 - PPC (Production Planning And Control)
 - Material Preparation
 - Fabrication
 - Welding
 - Finishing And Cleaning
6. QHSE Department
7. Dispatching
8. Installation/Erection

ENGINEERING DEPARTMENT

- We Have An Experience Team Of Engineers & CAD Draftsmen, Tekla Modelers & Detailers
- Connection Design Using Idea Statica Software.
- Modeling ,Detailing And Checking Done Using Trimble Tekla & AutoCAD Software
- Generating Of Shop Fabrication Drawings , GA(As Built) Drawings, Reports, Cutting List, Assembly List And MTO.
- Technical library of All Standards like ARAMCO, AISC, PIP.



WASI STEEL INDUSTRIES FACTORY CO.



wasi steel industries
واسي للصناعات الحديدية

PLANT PRODUCTION FACILITY

Total Plant Area (M²): 7500
Fabrication Capacity : Up To 600 Tons/Month



BUILDING RELATIONSHIP ON INTEGRITY & PERFORMANCE

PLANT PRODUCTION MACHINERY

Kaltenbach Beam Line
Capacity Range W * H : 1300 * 700 Mm



BUILDING RELATIONSHIP ON INTEGRITY & PERFORMANCE

PLANT PRODUCTION MACHINERY



BANDSAW M/C



SHEARING M/C



ESAB CNC PLASMA/OXY



ROTA CUTTER



RADIAL DRILLING



IRON WORKER

PLANT PRODUCTION EQUIPMENTS

Three over head cranes 5 Tons each



SMAW & SEMI Automatic Welding Machines



QHSE DEPARTMENT

- Team Of Qualified And Certified Welding Inspectors (4 Engineers - CSWIP 3.1).
- Certified Coating Inspector (BGAS Grade 2) & NDT Inspector S (VT, RT, UT, PT & MT)
- Certified NEBOSH Safety Co-Ordinator
- Committed To Deliver With Total Customer Satisfaction Through Continuous Improvement .
- Implementation Of ISO 9001:2015 Requirements.
- Problem Solving And Lesson Learning Methodology.



IMS , QUALITY & HSE POLICIES



wasi steel industries
واسي للصناعة الحديدية

Integrated Management System (IMS) Policy

WASI Steel Industries Factory Co.'s Management approved Subsequent policies, which are related to multiple ISO standards' under a comprehensive policy (the Integrated Management System – IMS – policy) to deliver a consistent level of excellent service and customer satisfaction with safe working practices while having minimal impact on the environment. This is supported by a process of continual improvement designed to include explicit delivery of the following commitments to:

The objectives of the policy are:

- Fulfill the QMS ISO 9001:2015, EHS ISO 14001:2015, ISO 45001:2018.
- WASI's Business processes review and continual improvement, in order to increase its effectiveness and efficiency.
- Assure, and control the quality of WASI's business processes, in order to promote the business values such as quality culture, trust, integrity, respect, communications & follow up, and continually improve the business processes of Quality, Environment, Health & Safety, Customer Service, and Customer Complaints Handling.
- Deliver our mandates and business commitments through eco-friendly business processes with the minimum environmental impacts and emissions.
- Deliver our mandates and business commitments through safe and healthy business processes that protect the lives of our valued customers, employees, and visitors with a serious elimination of any occurrence of health and safety related risks or hazards.
- Adhere to the regulations and the legal requirements of the Environment, Health, and Safety – EHS – management systems, which are issued by the relevant government authorities.
- Manage a professional customer service efficiently and to offer fast, error free and modern services to our customers, in order to delight them.
- Manage the customers' complaints efficiently and independently, in order to assure its nonoccurrence in future and to drive the improvement process.
- Assure the suppliers' compliance to the quality, environment, health, and safety regulations.
- Engage and consult with the concerned parties on health and safety issues and methods to ensure knowledge, assessment and monitoring of workplace risks.
- Additionally, the leadership team undertakes to publish the IMS policy through the available means to all interested parties such as employees and to review it periodically.



WALEED KHALED AJAB ALHAJRI

CEO



wasi steel industries
واسي للصناعة الحديدية

QUALITY POLICY

WASI Steel Industries Factory Co. is committed to Provide design and manufacturing of structural steel that meet customer's requirements and conforms to good professional practices recognized by the industry in accordance with applicable international standards.

Our Quality Policy commitment is based upon:

- Complying with the requirements of ISO 9001, AWS D1.1 and AISC standards.
- Continually improving our Quality Management System.
- Establishing quality objectives and periodically reviewing performance.
- Focusing on progress improvement initiatives.
- Providing safe and healthy work environment.
- Developing employee skills and increasing their contribution through effective training.
- Ensuring our suppliers and contractors meet our quality requirements.
- Keep up with changes in the industry and updating staff on the changes and new developments.
- Motivate all staff to understand and implement the policies, procedures, standards and instructions of the company's quality system.
- Adhere to all client requirements and periodically review the system to ensure that the system is audited for continuing effectiveness and suitability.



WALEED KHALED AJAB ALHAJRI

CEO



wasi steel industries
واسي للصناعة الحديدية

HEALTH, SAFETY & ENVIRONMENT POLICY

WASI Steel Industries Factory Co. ensures the health, Safety and environment of our employees and other persons who may be affected by our operations.

Adequate resources will be provided to ensure a safe and effective performance.

The objectives of the policy are:

- To provide and maintain a safe, health and environmental friendly work place for our employees, contractors and the community.
- To strive continually for improvement in occupational health, safety and environmental performance through the definition of operational standards, training, assessment and audits.
- To pursue proactively the minimization of occupational legislation and other applicable requirements relevant to WASI activities and services and regularly evaluate its compliance with such requirements.
- To identify hazards and associated risks and application of suitable precautionary and control measures.
- To set a good example for others by demonstrating a level of awareness that will prevent unsafe acts and behavior that could result in an injury, illness, or loss of property on and off the job.
- To ensure that any waste disposed of in a safe and environmentally sound way and endeavor to eliminate the production of polluting emissions or discharge into the environment.
- To set targets, objectives and programs and review them regularly with the aim of improvement in occupational health, safety and environmental performance.

We encourage all constructive feedback for continual improvement.

We care about each other and those around us, and we believe that all injuries, occupational illness and environmental exceedances are preventable.



WALEED KHALED AJAB ALHAJRI

CEO

WASI STEEL INDUSTRIES FACTORY CO.



wasi steel industries
 واسي للصناعة الحديدية

ISO - CERTIFICATES



CERTIFICATE

This is to Certify that the
 Quality Management System
 of

WASI STEEL INDUSTRIES FACTORY CO.

12th Street, 2nd Industrial City, Dammam - Kingdom of Saudi Arabia

has been found to comply with

ISO 9001:2015

This certificate is applicable to the following scope:

Design, Manufacture and Supply of Industrial Steel Structure.

Certificate No :: I-QSC202006041

Date of Initial Registration	15, June, 2020
Surveillance Audit on/Before	15, May, 2021
Certificate Expiry	14, June, 2021
Recertification Due	14, June, 2023



Khawlan
 Authorized Signatory
 BQC ASSESSMENT PRIVATE LIMITED
 (formerly BQC Certifications)

BQC Certification is accredited by International Accreditation Services (IAS), United States of America wide MSCB Number 124. Accreditation details are available with IAS, (International Accreditation Service) Inc. USA, at www.iasonline.org. The validity of this certificate can be verified at www.bqccert.com or through info@bqccert.com. This certificate is the property of BQC Certifications and must be returned on request.



CERTIFICATE

This is to Certify that the
 Occupational Health & Safety Management System
 of

WASI STEEL INDUSTRIES FACTORY CO.

12th Street, 2nd Industrial City, Dammam - Kingdom of Saudi Arabia

has been found to comply with

ISO 45001:2018

This certificate is applicable to the following scope:

Design, Manufacture and Supply of Industrial Steel Structure.

Certificate No :: I-OHSC202006016

Date of Initial Registration	15, June, 2020
Surveillance Audit on/Before	15, May, 2021
Certificate Expiry	14, June, 2021
Recertification Due	14, June, 2023



Khawlan
 Authorized Signatory
 BQC ASSESSMENT PRIVATE LIMITED
 (formerly BQC Certifications)

BQC Certification is accredited by International Accreditation Services (IAS), United States of America wide MSCB Number 124. Accreditation details are available with IAS, (International Accreditation Service) Inc. USA, at www.iasonline.org. The validity of this certificate can be verified at www.bqccert.com or through info@bqccert.com. This certificate is the property of BQC Certifications and must be returned on request.



CERTIFICATE

This is to Certify that the
 Environmental Management System
 of

WASI STEEL INDUSTRIES FACTORY CO.

12th Street, 2nd Industrial City, Dammam - Kingdom of Saudi Arabia

has been found to comply with

ISO 14001:2015

This certificate is applicable to the following scope:

Design, Manufacture and Supply of Industrial Steel Structure.

Certificate No :: I-ESC202006016

Date of Initial Registration	15, June, 2020
Surveillance Audit on/Before	15, May, 2021
Certificate Expiry	14, June, 2021
Recertification Due	14, June, 2023



Khawlan
 Authorized Signatory
 BQC ASSESSMENT PRIVATE LIMITED
 (formerly BQC Certifications)

BQC Certification is accredited by International Accreditation Services (IAS), United States of America wide MSCB Number 124. Accreditation details are available with IAS, (International Accreditation Service) Inc. USA, at www.iasonline.org. The validity of this certificate can be verified at www.bqccert.com or through info@bqccert.com. This certificate is the property of BQC Certifications and must be returned on request.

MANAGEMENT SYSTEM CERTIFICATE

MANAGEMENT SYSTEM CERTIFICATE

MANAGEMENT SYSTEM CERTIFICATE

WASI STEEL INDUSTRIES FACTORY CO.



wasi steel industries
واسي للصناعة الحديدية

OUR PROJECT PICTURES - STRUCTURAL STEEL BLDG

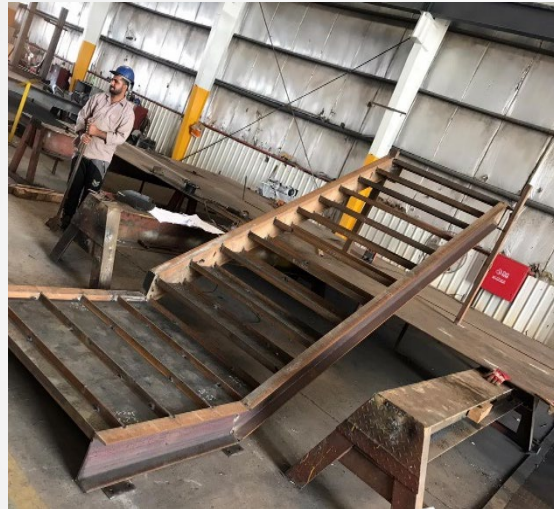


BUILDING RELATIONSHIP ON INTEGRITY & PERFORMANCE

OUR PROJECT PICTURES - MISC.



OUR PROJECT PICTURES - MISC.



OUR PROJECT PICTURES - MISC.



WASI STEEL INDUSTRIES FACTORY CO.



wasi steel industries
واسي للصناعات الحديدية

OUR APPROVALS LIST.

COMPANY	APPROVAL	VENDOR ID	COMPANY	APPROVAL	VENDOR ID
 <p>أرامكو السعودية saudi aramco</p>	Steel Structure Fabrication	10064868	 <p>الهيئة العامة للغذاء والدواء SAGIA</p>	Steel Structure Fabrication	14195
 <p>سابك sabik</p>	Steel Structure Fabrication	11047317	 <p>تطوير البترول TATWEER PETROLEUM</p>	Steel Structure Fabrication	5648
 <p>صدارة Sadara</p>	Steel Structure Fabrication	1000003883	 <p>شركة تطوير البترول Tatweer Water Services Corporation</p>	Steel Structure Fabrication	6337
 <p>الشركة السعودية للكهرباء Saudi Electricity Company</p>	Steel Structure Fabrication	2007006	 <p>Kirby BUILDING SYSTEMS</p>	Steel Structure Fabrication	60006950
 <p>معادن MAYADEN</p>	Steel Structure Fabrication	13952	 <p>HQC</p>	Steel Structure Fabrication	11060012

BUILDING RELATIONSHIP ON INTEGRITY & PERFORMANCE