



شركة علي ابراهيم العوفي التجارية

ALI IBRAHIM AL-OUFY
TRADING COMPANY

**ELECTRICALS
INDUSTRIAL
SAFETY**

*Since
1985*

www.aloufyelectricals.com



ON SHORE & OFF SHORE OIL RIGS

- Cable glands explosion proof
- Light fixtures hazardous locations
- Plug and socket hazardous location
- Power connectors
- Warning lights
- Starter push button station
- Switchboard mats
- Instruments



REFINERY

- Cable ties and legs
- Cables
- Cable tray
- Circuit breaker RCCB
- Panel board
- Banding
- Industrial switches and sockets
- Grounding
- EMT and rigid fittings
- Fuses



CONSTRUCTION

- Commercial lights and lamps
- Insulation tapes
- Residential switches and socket
- Emergency lights
- Wire and cables
- Conduits and conduit fittings
- EMT and RIGID
- PVC coated fittings
- Liquid tight fittings
- UL listed products

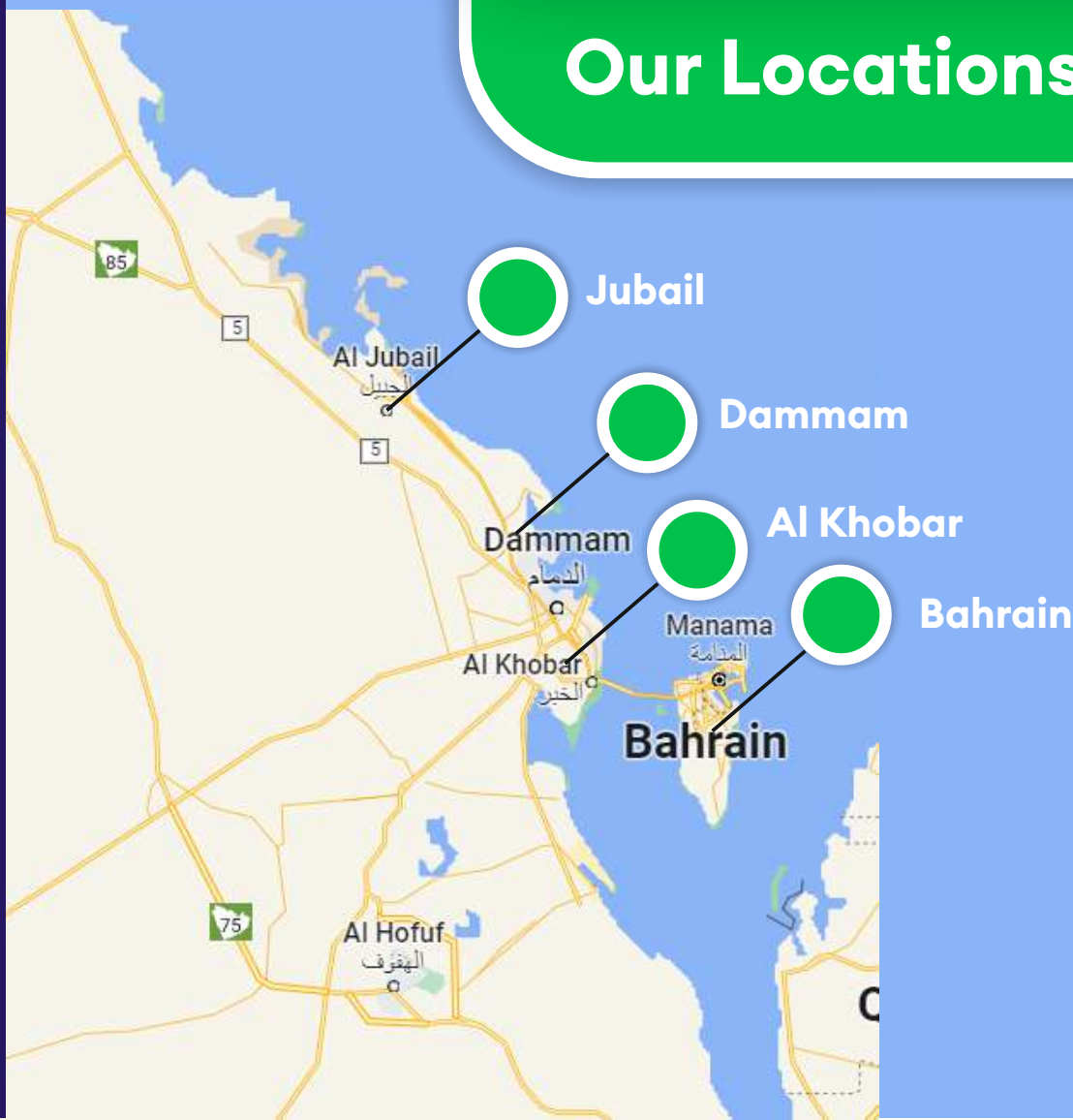
Company Profile

Ali Ibrahim Al-Oufy Trading Co is a well reputed organization started the operation in 1985 in The Kingdom of Saudi Arabia and gradually expanded in other GCC countries. We are the major suppliers of Electrical, Mechanical and telecommunication products for the past 35 years. We have a number of qualified and well experienced staff catering all the requirements of our client's demands.

Ali Ibrahim Al-Oufy Trading Co has got joint venture operations in USA, Bahrain and UAE which helps us to provide high end quality products to our clients at a reasonable price and is a registered Saudi Aramco vendor (ID – 10013454) and SABIC. .

Ali Ibrahim Al-Oufy Trading Co office is located in AL Khobar and joint venture operations are located in Dammam, Jubail, Bahrain and Dubai. Our organization is connected with two distribution panel board manufacturing factories located in Dammam and Bahrain

Our Locations



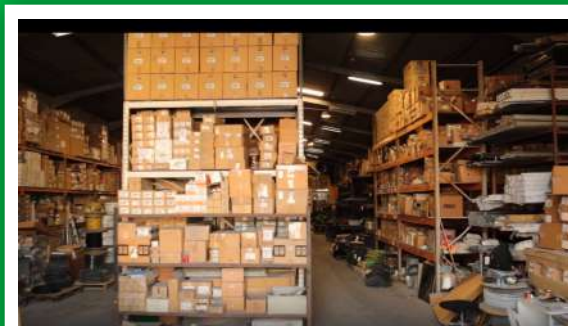
Certifications



Vendor certification



Our Shop & Warehouse



Light Fixtures-Explosion Proof



Hazardous Location LED Emergency Light



42W CFL Hazardous Location Light with Emergency Battery Backup



Exit Light LED Green 8 W Ip65 220 V 6500K ED/LED/M3E Orbik



Flood Light Fixture LED 122w 120-277v Killark - Marine Atex



Flood Light Fixture LED 132W 100-277VAC RIG-A-LIGHT, Explosion Proof Hazardous Location



Flood Light Fixture LED Cool White Chalmite



Light Fixture LED 69 W 120-277V RIG-A-LITE



LED globe and guard lighting for hazardous locations



Emerson - New LED Solution for Retrofitting High Bay Lighting



Emerson - Areamaster™ Generation 2 HL LED Luminaires provide lumen output levels of 24,000 to 38,000 lumens (1000 to 1500 Watt HID equivalents)



Emergency Light Dual Head LED 120-347 VAC Kallayil



Emergency Light Dual Head LED 120/277 VAC Surelite SEL17 Eaton



SATCO Wall Pack Outdoor LED Lights - 39 Watt



LED Explosion Proof Hand Lamp - 8W Hand Lamp | Worksite Lighting



Explosion Proof LED Exit Sign and Emergency Light



Explosion Proof Edge Lit LED Exit Sign Red and Green



Exit Light 120/277 V EZXTEU 2 G W EM Double Face Green



Exit Light 120/277 V Mirror Type ELXTEU-2-G-MA-EM



Class 1 Division 2 Hazardous Location Exit Sign Combo. It provides emergency backup power to the exit sign for at least 90 minutes, and only requires 48-hours to fully recharge



Appleton™ ATX™ FNES LED Series Self-Contained Emergency Lighting System

EMERSON

EATON

Dialight

Chalmite

RIG-A-LITE

rayTEC

ORBIK

KILLARK

orbit
Orbit Industries, Inc.

PHILIPS

الإنارة الوطنية
National Lighting

ناردين
nardeen

الأظواء
AL ADWAA

VENAS

kallayil

Industrial Power Connectors & Accessories



Appleton 200 Amp Powertite series by Emerson



EBR 100 AMP Series Receptacles, with Circuit Breaker Appleton



Explosion-Proof Pin & Sleeve Receptacle, 30A-125/220V 4P3W with box Appleton



Explosion-Proof Receptacle, EFS Series 20 Amp, Appleton



Explosion-Proof Receptacle, EFSC Series 20 Amp, Appleton



Explosion-Proof Receptacle, EFSC Series 20 Amp, Appleton



Appleton - Plug, 60 Amp - 4 Pole



Mounting Box 3/4", 30 Amp, Appleton

Amphenol



GALVAN INDUSTRIES, INC.

Grounding & Lightning



Air Rod 16 mm x 3000 mm long Furse RA 250



Bus Bar 4" width x 1/4" thick x 20" length Erico



C Crimp Connector 16-25 mm2 x 16x25 mm2 Burndy



C Crimp Connector 50-70 mm2 x 50x70 mm2 Burndy



Ground Rod 3/4" x 10 ft Furse RB 335



Combination Bus Bar 3P x 1 Mtr long



Concrete Inspection Pit 320 x 320 x 190 mm PT 005 Furse



Copper Tape 25 mm x 3 mm Furse



Fillers : Bentonite / Furse CM 015



Ground Rod Clamp 19 MM Furse CR 520



Flint Gun Thermoweld



Ground Bus Bar Kit 1/4" x 4" x 12" Thermoweld



Ground Conn U Clamp 1" x 4" - 2/0 AWG 2 way Burndy



Ground Conn U Clamp 3/4" x 2/0 250 MCM 3 way Burndy



Marconite Conductive Aggregate 25 kg/bag Furse CM 025

Cable Lug



1/0 (50 mm2) One Hole La Type



Pre-Insulated Terminal Blade 1.5 mm2 x 18 mm



Bootlace Terminal 0.5 mm2 x 8 mm Boot



Cable Lug 1 hole 6 awg x 1/4"



Cable Lug 2 hole 2 awg x 1/2"



Pre-Insulated Terminal Female 1.5 mm2 x 4.8 mm Blue



Cable Lug 2 hole 6 awg x 1/2"



Pre-Insulated Butt Splice Connector 4-6 mm2 x 6.8 mm Dia



Cable Lug 2 hole 777 mcm x 1/2"



Cable Lug 4 hole 1000 mcm x 1/2"



Cable Lug Pin Type Uninsulated 10mm2



Partex Cable Lugs



Safety Harness, Glasses and Helmets



UVEX Astrospec 2.0 Spectacles, Eye Protection, Polycarbonate, Clear Lens - 9164.275



Miller H700 Full Body Harness Honeywell



Miller Titan™ II Stretch Tubular Built-In Shock-Absorbing Lanyards by Honeywell



Honeywell North Zone™ Hard Hat Cap



Ansell AlphaTec® 08-354 liquid-proof industrial glovesonate, Clear Lens - 9164.275



Ansell AlphaTec® 4000 CFR Stitched & Taped, Model 111



Dräger PARAT® 7500 Escape Hood - 7520 (Soft Pack) R59427



Safety Boot Unisex Steel Toe Rubber Hydroshock Waterproof Dielectric Work

Wiring Devices - Circuit Breakers - Safety Switches



Twist-Lock® Edge Series
Improve installation time by over 80% with screwless terminations



inREACH™ Cord Reels
Re-designed mounting bracket allows for effortless installation



USB-C® PD Receptacles
Charge laptops and devices faster with Power Delivery USB, up to 55W



Circuit Lock Disconnects
The highest-performing motor disconnects for every environment



Schneider Acti9 iC60H 4P C 6A MCB



Schneider Arc Fault Circuit Breakers, 630 A, 690V, MG.LV432893



GE 60 Amp 240-Volt Fusible Indoor General-Duty Safety Switch Tg3222



GENERAL ELECTRIC - Safety Switch, 100A 3P 240V Fusible



CEE-wall mounted socket 16/32A



CEE-plugs 16/32A Series SHARK



CEE-connectors 16/32A series



X-CEE Safety Performance industrial sockets in technopolymer from 16A to 125A, IP66/ IP67/IP68/IP69 16/32A GRIP by Palazzoli



STRAIGHT PLUG HP - IP66/IP67/IP68/IP69 - 2P+E 63A 380-415V 50/60HZ - RED - 9H - MANTLE TERMINAL by Gewiss



VERTICAL FIXED INTERLOCKED SOCKET OUTLET - AUTOMATIKA - MT 6KA CURVE C - WITHOUT BOTTOM - 2P+E 16A 110V 4H - Ip67 by Gewiss



10° ANGLED FLUSH-MOUNTING SOCKET-OUTLET - IP44 - 3P 16A 20-25V and 40-50V 100-200HZ - GREEN - 4H - SCREW WIRING by Gewiss



X-CEE Safety Performance industrial plugs in technopolymer from 16A to 125A, IP66/IP67/IP68/IP69 by Palazzoli



Industrial plugs & Socket Outlets by Marechal Electric



USB Charging Sockets by British General



RCD Protected Sockets (Storm Weather Proof) by British General



13A SINGLE SWITCHED SOCKET + USB by hager



EMT Fittings & Rigid Fittings



orbit
Orbit Industries, Inc.

SPEEDWELL
COMMITTED TO EXCELLENCE

Roxtec

Couplings, RIGID/IMC & PVC Coated RMC Conduits



ITCC

Smoke Detectors - Signaling Lights



0827 BRK IONIZATION
BATTERY POWERED SMOKE
ALARM WITH 10-YEAR SEALED
LITHIUM BATTERY



3120B Hardwire Dual Sensor
Smoke Alarm With Battery
Backup



CO5120BNA 120V Hardwired
Carbon Monoxide Alarm With
Battery Backup



1039760 Combo Explosive Gas
And Carbon Monoxide Alarm
With Digital Display



Tomar 4375L Explosion Proof
Warning Light - Intrinsically Safe
Store



GNExB2L LED Multifunction
Beacon | TOMAR Electronics



StackLightTM - Edwards Signaling



107XBR XTRA-BRITETM LED
Hazardous Location Beacon -
Edwards Signaling

BRK
THE PROFESSIONAL STANDARD

Edwards
SIGNALING

TOMAR

FEDERAL SIGNAL

Electrical Testing Equipments - Ferrule Printers - Switchboard Matting - Coating & Wall Thickness Meters



Fluke 87V TRMS Industrial Multimeter



Fluke 1630-2 FC Earth Ground Clamp



Fluke TIS20 Infrared Camera



Fluke 1587 FC Insulation Multimeter

FLUKE

**TELEDYNE
FLIR**

Megger

brother

Canon

**M + A
MATTING**

**RHINO
SWITCHBOARD MATS**

**e
elcometer**

**DeFelsko®
Inspection Instruments**



Fluke T6-1000 Electrical Tester



EXTERNAL VIBRATION
SENSOR FOR VIBRATION
METER FLUKE 805ES



Laser Photo Tachometer Extech RPM33



Fluke 500 Series Battery Analyzer



BESANTEK Large Display Thermo-
Hygrometer - BST-HYG2



BESANTEK Phase Rotation
Tester with Open Phase Checker
- BST-PR10



Mini Thermo-Anemometer Extech
AN 100



Brother PT-E850TKWLI Label Printer



TERMINAL EARTH RESISTANCE
AND SOIL RESISTIVITY TESTER
MEGGER DET4TC2



INSULATION RESISTANCE
TESTER METER 5KV MEGGER
MIT515



FERRULE PRINTER T1000
PROMARK PARTEX



FERRULE PRINTER MK5000 CANON



Rhino Switchboard Matting



Switchboard Matting By M+A



PosiTector® UTG
Ultrasonic Thickness Gage Measures
Wall Thickness by DeFelsko



Elcometer 266 Holiday Detector

Electrical Lubricants



Cable Pulling Compound 5 gal
Ideal



Duct Seal Compound 5 lbs/pac
Ideal



Duct Seal Compound 5 lbs/pac
Sealers



Fire Barrier Sealant 3m CP 25WB
+ Red



Heat Sink Compound Dow
Corning 340



Kopr-Shield CP 16 T&B 16 oz
Can UI U.S.A



Lectra Cleaner CRC 400 ml



PVC Touchup Compound 16 oz
Exterior Gray Patch P-G T&B Ocal



Sealing Compound Chico A 48
OZ + Fiber 1 lb Eaton Crouse
Hinds



Thread Lubricants 8 oz/can STL8
Crouse Hinds



Thread Lubricants Penetrox-A 8 oz
Burdry



CRC Cable Clean - High Voltage
Splice and Termination Cleaner



Cable Ties & Accessories



Band SS 201 3/4" 30 mtr/Roll
Band-IT



Banding Tool 3/8" - 3/4" Band-IT



Buckle SS 316 3/4" 100 Pcs/Box
Band-IT



Cable Cleat Polyamide Two Bolt
Single Dutchclamp SE 28-38



Tie Cable SS 316 Nylon Coated
4.6 mm x 201 mm Band-IT



Nylon Cable Tie Gun 2.2-4.8 mm
T11 Partex



SS Cable Tie Gun SSAT Partex



SS Embossing Machine 1/2"
Dymo



SS Embossing Tape SS 316 1/2"
X 21 ft Band-IT 10 Pcs/Box



Tie Cable 200 mm x 3.6 mm
Black Partex 100 Pcs/ Pkt



ALI IBRAHIM AL OUFY TRADING CO
P.O. Box 3192, Al-Khobar 31952, Prince Mohammed Street,
Cross 5/6, Kingdom of Saudi Arabia



013 898 4395

013 864 2907

BR. ALI IBRAHIM AL OUFY TRADING CO
P.O. Box 3192, Al-Khobar 31952, Prince Faisal Street,
Cross 5/6, Kingdom of Saudi Arabia



+966504940125

www.aloufyelectricals.com